

POSITIVE PATHWAYS
YOUR Network For Success

The diagram illustrates a network of four interconnected circles:

- EDUCATION COMMUNITIES** (top, blue circle with school icon)
- NON-PROFIT, PHILANTHROPIC ORGANIZATIONS** (left, orange circle with people and dollar sign icon)
- INDEPENDENT LIVING (SOCIAL SERVICES) COMMUNITY** (right, red circle with house icon)
- FAMILIES, PEERS, NEIGHBORHOODS** (bottom, green circle with people icon)

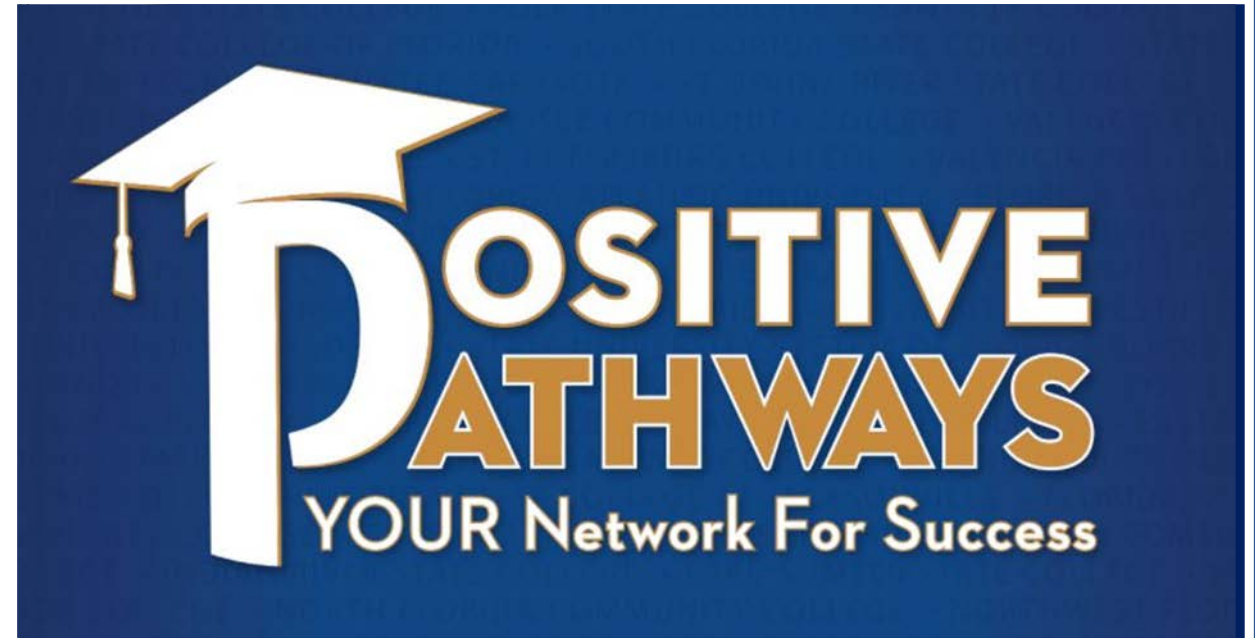
2023 Onboarding Presentation



Overview

Highlights

- Created in 2016 and funded by the Florida Department of Children and Families (DCF), in response to a Florida law requiring collaboration between DCF and the Florida Department of Education
- Dramatic increase in number of students from foster care using tuition and fee exemption
- Unique state-level program aimed at increasing post-secondary educational success among college students who lived in foster care in Florida
- Administered by Educate Tomorrow, a statewide non-profit organization
- Maintains and expands a network of members
- Began as Florida Reach, a volunteer statewide network





Purpose and Benefits

Purpose

To develop and support a statewide network of informed and empathetic, and dedicated education and child welfare professionals to support students from foster care and homeless settings through their journeys to post-secondary completion.

- Monthly network calls
- Targeted professional development
- Extensive and consistent networking opportunities
- Daily access to immediate technical support
- Alliance to Foster Transition x Education Research (AFTER)
- Small group support (College Connection)
- Updated resources and directory of campus-based and community-based liaisons



ACTION MODEL



Homeless and Foster Youth Services

Report 22-08

December 2022



Florida Statute 409.1452

State Legislation and Funding to Address the Educational Needs of Foster Youth Students

State Legislation

The 2013 Florida Legislature required the Department of Children and Families (DCF) to collaborate with the Board of Governors (BOG), Florida College System (FCS), and Florida Department of Education (FDOE) to help address the need for a comprehensive support structure in colleges and universities for youth who have been in or remain in the foster care system.³⁸ Select colleges and universities (as determined by DCF) were required to establish postsecondary educational campus coaching positions to provide foster youth students with dedicated, on-campus support.³⁹ These coaches (often referred to as liaisons) were required to be institution employees who are focused on supporting these youth.

In 2022, the Legislature modified statute to require every school district Adult and Career Education program, FCS institution, and state university that has at least one student using the foster care tuition waivers to have, at a minimum, a knowledgeable, accessible, and responsive employee who acts as a liaison and provides assistance to those students who are eligible for the tuition waiver to assist in resolving any problems related to the waivers and provide on-campus support.^{40,41,42} This requirement also now applies to students receiving a tuition waiver due to homelessness, many of whom may have received services through the school district homeless liaison while in primary and secondary school.⁴³ The Chancellors of the Division of Career and Adult Education, the FCS and the State University System (SUS) are required to annually report to DCF specific data about the students served by the campus liaisons, including academic progress, retention rates for students enrolled in the program, financial aid requested and received, and information required by the National Youth in Transition Database.⁴⁴

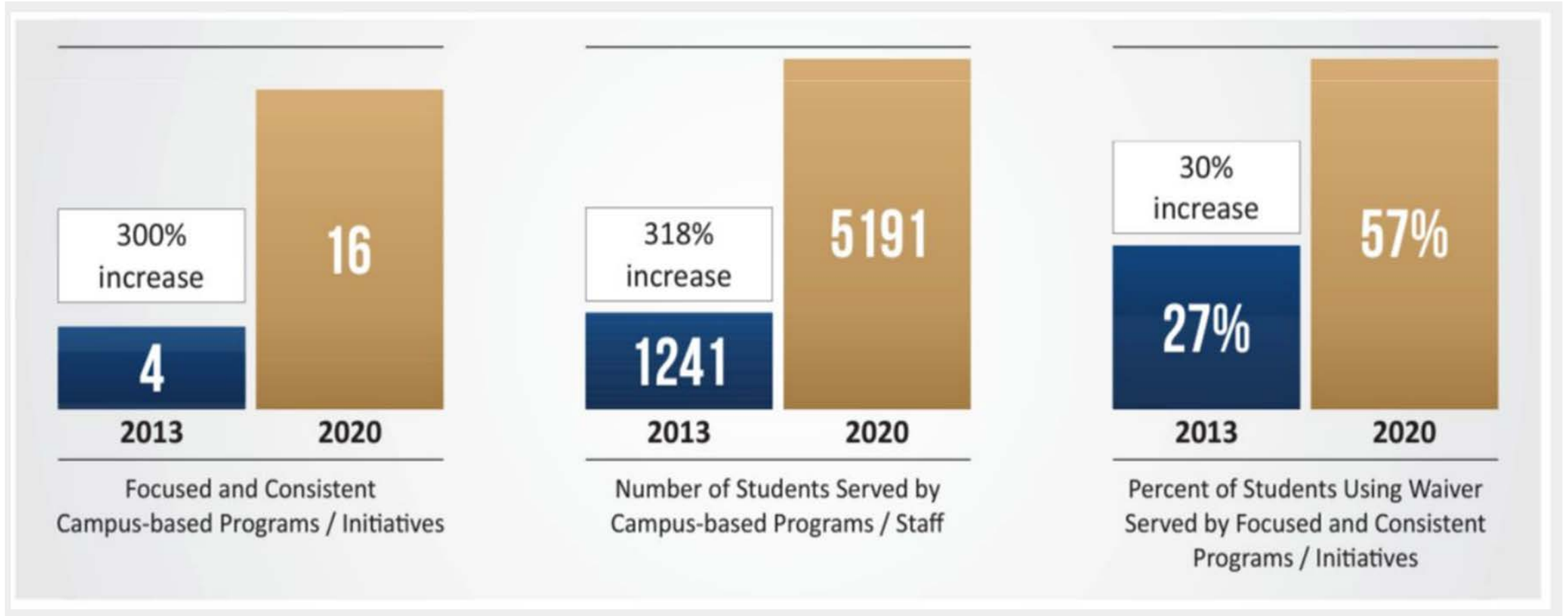
To meet these statutory requirements, DCF contracts with a nonprofit organization, Educate Tomorrow, to assist institutions in establishing campus liaisons. The Educate Tomorrow liaison contract, referred to as Positive Pathways, requires the organization to coordinate, develop, and maintain a network of postsecondary campus-based support initiatives across the college and university systems. Positive Pathways works to help liaisons understand the value of supporting the students on their campuses and to create a network of child welfare professionals, both on and off college and university campuses. This assistance is provided through technical assistance, trainings, monthly calls, and funding.





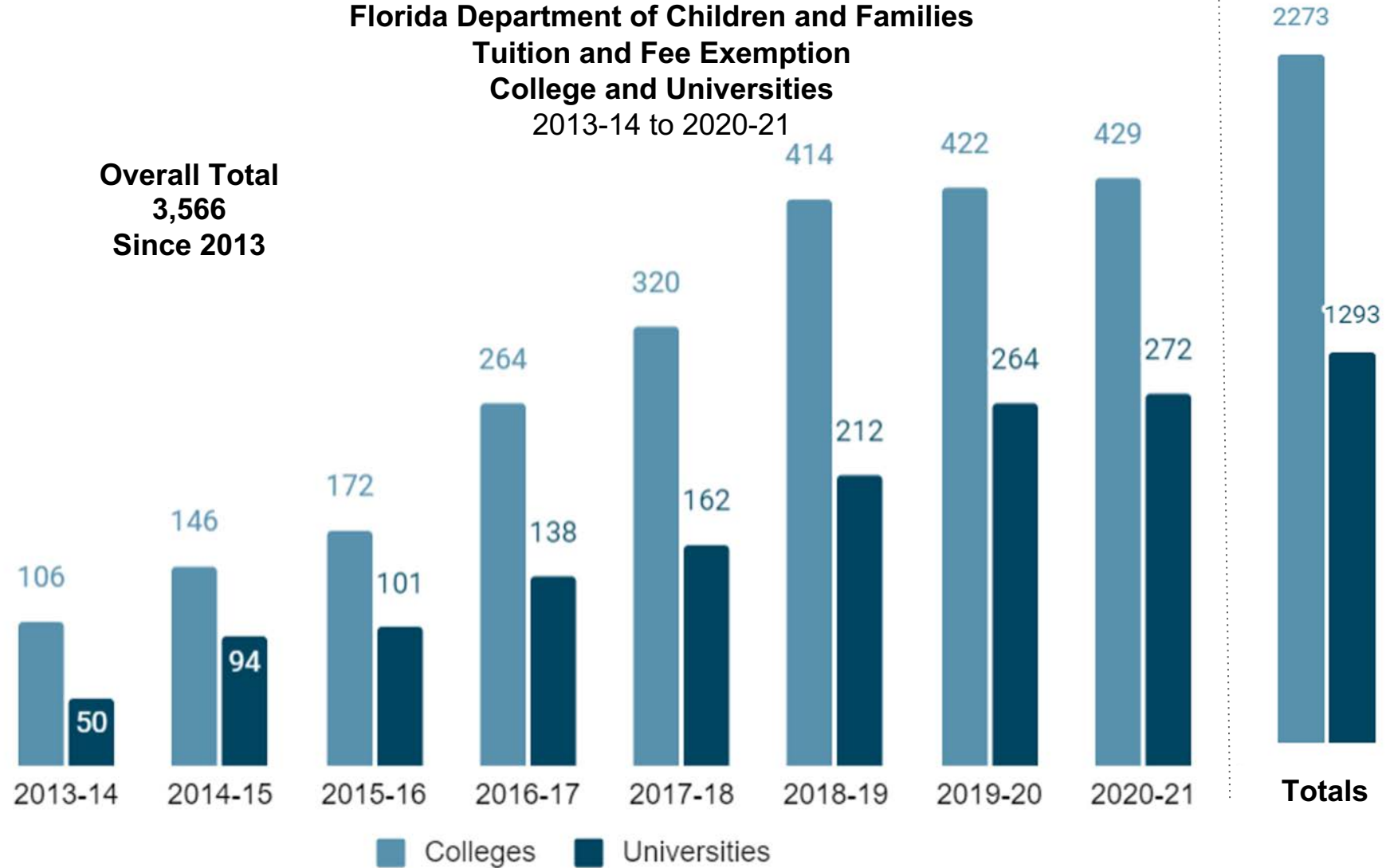
Data

University and State College Campus-Based Programs and Number and Percent of Students Using DCF Tuition Exemption 2013 to 2020



Students who Graduated Using the Florida Department of Children and Families Tuition and Fee Exemption College and Universities 2013-14 to 2020-21

**Overall Total
3,566
Since 2013**



Sources: Florida SUS BOG, 2022; Florida College System, 2022

Key Data Points

- Tuition and Fee Exemption use shows steady long-term growth
- Each year approximately 1,000 young adults turn 18 while in foster care in Florida. These are the students from which Positive Pathways draws its key target population.
- About 33% of these students are still in HS at age 18.
- There has been a 108% increase in number of Florida's State University System students using tuition exemption since 2015.
- There has been a 38% increase in number of students using tuition and fee exemption since 2015.
- These students are served by foster care liaisons who may be associated with the Positive Pathways Network





**Number of Homeless Students Statewide
2020-21**

63,946

**Number of 12th-Grade Homeless Students
Statewide
2020-21**

**4,784
(2,100 UHY)**



**Number of Students Using Homeless Waiver in
Florida College System Colleges
2020-21**

723



**Number of Students Using Homeless Waiver in
State Universities
2021-22**

344

Table 1. Course Enrollments and Student Success Rates of Students with a Homeless Exemption, 2020-21

| | Homeless Exemption |
|--------------------|--------------------|
| Average GPA | 2.76 |
| Course Enrollments | 3,378 |
| C or Higher | 2,024 |
| D, F, U | 747 |
| Withdrawals | 500 |
| Other | 107 |

Source: Bureau of PK-20 Education and Reporting, Florida Department of Education. Note: "C" or Higher includes "A", "B", "C", Pass, and Satisfactory. "Other" includes Incomplete, Progress, No Grade, and Audit.

Table 2. Total Number of Program Completions of Students with a Homeless Exemption, 2020-21

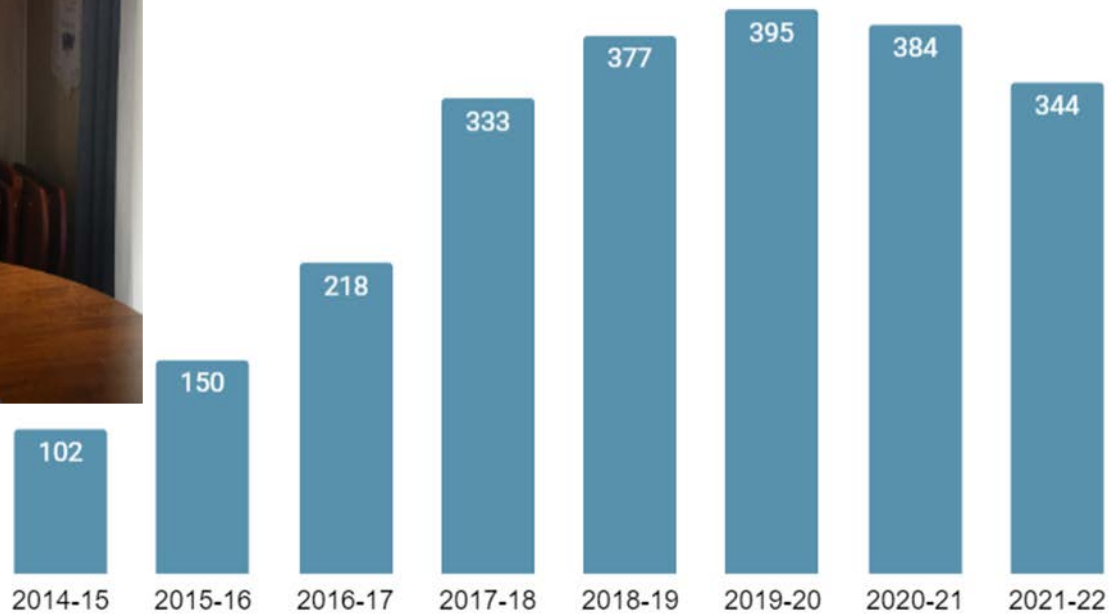
| | Overall Total | Associate In Arts (AA) | Associate in Science/ Associate in Applied Science (AS/AAS) | College Credit Certificate (CCC) | Career Certificate (CC) | Applied Technology Diploma (ATD) | Baccalaureate |
|------------------------|---------------|------------------------|---|----------------------------------|-------------------------|----------------------------------|---------------|
| FLORIDA COLLEGE SYSTEM | 83 | 32 | 11 | 30 | * | * | * |

Source: 2020-21 Student Database. Note: "*" indicates data have been masked to indicate less than 10 students to maintain FERPA compliance. The symbol "-" indicates no students in this category.



STATE UNIVERSITY SYSTEM OF FLORIDA

Students Using State of Florida Homeless Tuition and Fee Exemption 2014-'15 to 2021-'22




| Institution | Count | Amount |
|-------------|-------|-------------|
| SUS | 344 | \$1,666,951 |
| FAMU | 28 | \$191,538 |
| FAU | 53 | \$230,333 |
| FGCU | 29 | \$142,927 |
| FIU | 65 | \$313,096 |
| FPOLY | ** | \$22,560 |
| FSU | 32 | \$154,751 |
| UCF | 45 | \$119,660 |
| UF | ** | \$3,530 |
| UNF | 39 | \$240,932 |
| USF | 40 | \$199,240 |
| UWF | ** | \$8,425 |



Professional Development

Sample Professional Development Trainings Available for your use



FLORIDA DEPARTMENT OF CHILDREN AND FAMILIES
MYFLFAMILIES.COM

PPD
POSITIVE PATHWAYS PROGRAM
TOGETHER, WE CHANGE LIVES

EDUCATE TOMORROW

Homeless and Foster Youth Services
April 2019
December 2021

OPPAGA

Positive Pathways Quarterly Webinar
Winter 2023
OPPAGA Report on Homeless and Foster
February 1, 2023



FAFSA®
Federal Student Aid
An OFFICE of the U.S. DEPARTMENT of EDUCATION

FAFSA:
Homeless and Foster Youth

JASMINE MOORE, SUCCESS COACH

PATRICK SIMON, PRESIDENT,
CITRUS COUNTY COALITION FOR COLLEGE AND CAREER

Quarter Newsletters



PROGRAM NEWSLETTER
JANUARY 2023
A FLORIDA DEPARTMENT OF CHILDREN AND FAMILIES PROGRAM



FLORIDA DEPARTMENT OF CHILDREN AND FAMILIES
MYFLFAMILIES.COM



EDUCATE TOMORROW

Statewide Government Study Sheds Light on Campus Foster Care and Homeless Liaisons

The State of Florida's consistent efforts to provide free tuition to students from foster care and homeless backgrounds, and the work of Positive Pathways Program (PPP) members, have resulted in impressive academic outcomes for students who can make it into a postsecondary educational program.

That is a major conclusion that can be drawn from a first of its kind report by the Florida Office of Program Policy Analysis and Government Accountability (OPPAGA). OPPAGA, the research arm of the Florida Legislature, released a report last December that focused on the work of school district McKinney-Vento homeless liaisons and post-secondary campus-based foster care liaisons, many of whom are part of the Positive Pathways Program.

The report included new information about the opinions and academic progress of thousands of postsecondary students using Florida's generous homeless and foster care tuition and fee exemptions. For instance, the report stated that the number of students using tuition waivers in the SUS increased from 940 in academic year 2016-17, when Positive Pathways began, to 1,458 in 2020-2021, a 55% increase, despite COVID-19. The percent of students using the DCF waiver at Florida College System (FCS) institutions increased from 3,701 in 2016-17 to 4,375 in 2020-19, an 18% increase, before dipping to 3,966, a 9% decrease. Furthermore, the number of students from foster care that attend an institution with a campus-based program increased from 905 in 2013-14 to 3,042 in 2021-22, a 236% increase.

The report also revealed that of the 10,681 foster youth who began using the post-secondary waiver from 2013-14 to 2020-21, the majority of students had at least a 2.0 GPA at the end of their first year of education, which demonstrates adequate academic progress as defined by the state.

Click [Here](#) for OPPAGA's Website.

- Continued on Page 3

Homeless and Foster Youth Services

Report 20-08
December 2022



"All of Florida's postsecondary institutions have at least one staff member designated as working specifically with foster care students."

- OPPAGA, 2022



PROGRAM NEWSLETTER
Fall 2021

In This Issue

- Page 2: New Daytona Beach Liaison
- Page 2: Member Survey Results
- Page 3: Student Success Story
- Page 3: FAU Program Receives Award
- Page 4: FSU Professor to Present Study

DCF ESTABLISHES OFFICE OF CONTINUING CARE, DIRECTOR TO SPEAK TO PPP NETWORK



Taylor Peck

The Florida Department of Children and Families (DCF) has established a new office to help meet the needs of students over age 23 who had been in foster care in Florida. The Office of Continuing Care (OCC), which will be the new home of the Positive Pathways Program, began on October 1. The OCC will provide services to students from foster care who have reached age 23 when DCF's core services end.

OCC will be led by Taylor Peck, who is transitioning from her role as director of Florida's Foster Information Center, which serves foster parents. Ms. Peck is a former foster parent and a guardian ad litem. She also served as a legislative aide to a former Florida senator. A Florida State University graduate, Peck holds a bachelor's degree in writing and media and a master's in public administration. Ms. Peck will introduce herself and share a bit of her vision for OCC during the Nov. monthly conference call. Register [HERE](#).

Cal Walton III, who oversees Positive Pathways for DCF, moved from the DCF Office of Child Welfare to the OCC and will continue to oversee Positive Pathways, which is administered by Educate Tomorrow and has been led by Dr. Steve J. Rios since it was created by DCF in 2016.

Mr. Walton, Youth and Young Adult Transitions Services, presented about the OCC and other positive changes related to the state's independent living program during the October Positive Pathways meeting. Click [HERE](#) to view Mr. Watson's presentation.



Cal Walton, III, J.D.

Regional Forums to Inform Campus Coaching and Community Partners About the New Legal Requirements.



Regional Community Forum

Miami Dade College North Campus, AI Center (Building 1, Room 1230)
Wednesday, September 14, 2022, 2-3:30 p.m.

Miami Dade's Response to the Requirements of Florida's Chapter No. 2022-65

- | | |
|--|--|
| 1. Welcome | Crystal Lewis, Dean of Student Services Miami Dade College North Campus |
| 2. Overview of Event and Introductions | Dr. Steve J. Rios, Senior Director DCF Positive Pathways Program |
| 3. Legislators' Comments - The Intent of the Law | State Representative Marie Woodson (D, District 101) |
| 4. Background and Context | Brett McNaught, CEO, Educate Tomorrow |
| 5. Panel of Students Using Homeless Waiver | Janessa Collins, Graduate Fellow / Changemaker (Moderator) Educate Tomorrow |
| 6. Response to the Law | Dr. Elisabet Vizoso, Registrar and Director of Admissions Miami Dade College (MDC) Janet Mapp, Collegewide Director of Single Stop, Miami Dade College Ana Ramos, Director, Fostering Panther Pride Florida International University |
| 7. Miami Dade County's Collaborative Approach | Devin Floyd, Care Coordinator Educate Tomorrow Amy Christopoulos, Director, Community Outreach, Project Upstart Miami Dade County Public Schools |
| 8. Questions and Answers | Participants |
| 9. Close Out | |

Regional Community Forum

Thursday, March 23, 2023
10 - 11:30 p.m.

Florida Behavioral Health Association Conference Center
3116 E Park Ave, Tallahassee, FL 3230
Greater Tallahassee Response to the Requirements of
Florida House Bill 1577 Related to Students Using the Homeless Waiver

Purpose: The purpose of this meeting is for the Department of Children and Families Positive Pathways Program to share information about House Bill 1577 so that campus and community leaders can know what is being asked of them in terms of how they serve students using the homeless tuition exemption. The meeting also will be a chance for representatives from a variety of organizations that serve these young people to be introduced to, and network with, each other.

- | | |
|--|---|
| 1. Welcome | Jack Levine, Founder, 4 Generations Institute |
| 2. Overview of Event and Introductions | Dr. Steve J. Rios, Senior Director DCF Positive Pathways Program Educate Tomorrow |
| 3. Introductions of Participants | Attendees |
| 4. Requirements of HB 1577 | Dr. Rios |
| 5. Questions, Comments and Answers | Participants |



COLLEGE COACH MANUAL

TABLE OF CONTENTS

Introduction

Approach

What is a College Coach?

Why College Coaches?

Student Identification

College Coach Program Goals

College Coach Model

Appointment Prep

Initial Meeting

Follow-up Meeting

Contacting Students

Common Coaching Topics/Scenarios



Laws

Tuition Waivers for Youth Who Have Experienced Foster Care

- The State of Florida provides tuition and fee exemptions, to eligible students, through age 28.
- The waiver is authorized at state public universities, public colleges, and technical colleges.
- Fee exemptions may be available to a student who:
 - He or she is, or was at the time of reaching 18 years of age, in out-of-home care.
 - He or she was adopted from the Department of Children and Families after May 5, 1997.
 - He or she is, or was at the time of reaching 18 years of age, placed in the custody of a relative or non-relative under s. 39.5085, s. 39.6221, or s. 39.6225, F.S.
 - He or she was reunited with his or her parents after spending at least 18 months in out-of-home care after reaching 14 years of age, including a reunification pursuant to s. 39.8155, F.S.

Note: The exemption remains valid until the student reaches 28 years of age. See [§ 1009.25\(1\)\(c\), \(d\), Fla. Stat.](#) For questions regarding eligibility or how to obtain a tuition and fee exemption form, CF-FSP 5220, contact your local Community Based Care Lead Agency or call Florida's Independent Living Resource Center, operated by daniel, at 1-844-YOUTH (844-459-6884).





Legal Context

- The Florida Legislature mandated, in 2014, that DCF collaborate with the Board of Governors (BOG), the Florida College System (FCS), and the Florida Department of Education (DOE) to help eligible youth transition to and through postsecondary educational settings.
- Chapter 409.1452: Addresses the need for a comprehensive support structure in the academic arena to assist young adults who have been or remain in the foster care system



Florida Statute 409.1452

The Department of Children and Families shall work in collaboration with the Board of Governors, the Florida College System, and the Department of Education to:

- help address the need for a focused and consistent campus-based comprehensive support structure in the academic arena
- to assist children and young adults who have been or continue to remain in the foster care system or who are experiencing homelessness to succeed in postsecondary education
- to help them make the transition from a structured care system into an independent living setting.
- provide educational campus liaison coaching positions
 - integrated into Florida College System institutions' and university institutions' general support services structure
 - provide current and former foster care children and young adults who have been or continue to remain in the foster care system or who are experiencing homelessness with dedicated, on-campus support.
 - employees of the selected educational institutions
 - focused on supporting children and young adults who have been or continue to remain in the foster care system or who are experiencing homelessness.

Collaboration



Educational Campus Coaching Positions

In 2014 the state passed legislation, (F.S. 409.1452):

The State University System of Florida and the Florida College System shall provide postsecondary educational campus coaching positions that will be integrated Florida College System institutions' and university institutions general support services structure to provide current and former foster care children and young adults with dedicated, on campus support.

- This legislation resulted in on campus foster care liaisons or coaches being appointed.
- All 28 colleges and all 12 universities have a designated person
- 7 colleges and universities have a dedicated staff person



HOUSE OF REPRESENTATIVES STAFF FINAL BILL ANALYSIS

BILL #: CS/CS/HB 1577 Homeless Youth

SPONSOR(S): Health & Human Services Committee and Children, Families & Seniors Subcommittee, Woodson and others

TIED BILLS: **IDEN./SIM. BILLS:** SB 1708

FINAL HOUSE FLOOR ACTION: 117 Y's 0 N's **GOVERNOR'S ACTION:** Approved

CS/CS/HB 1577 addresses the needs of homeless children and young adults. Specifically, the bill:

- requires district school boards to issue a certified unaccompanied homeless youth a card that includes information on the youth's rights and available benefits, and allows health care providers to accept the issued card as proof of the status as a certified unaccompanied homeless youth.
- expands the Keys-to-Independence program to unaccompanied homeless youth who meet certain requirements.
- waives fees for copies of a birth certificate for certified unaccompanied homeless youth and young adults who aged out of foster care.
- requires postsecondary institutions to have liaisons to assist former foster children and young adults and those experiencing homelessness to help students with issues related to the use of a tuition and fee exemption, and directs the Office of Program Policy Analysis and Government Accountability to evaluate their effectiveness.
- requires postsecondary institutions to retain original documents on a student's tuition and fee exemption, and prohibits additional requests for such documentation.
- aligns Florida's eligibility for a tuition and fee exemption with federal law.
- requires any student determined to be an unaccompanied homeless youth for a tuition and fee exemption for a preceding year to be presumed homeless for subsequent years unless an institution has conflicting information.



Requirements of Colleges and Universities

409.1452

(1)(a) Each school district program, Florida College System institution, or state university at which a student is exempt from the payment of tuition and fees under s. [1009.25](#) **must have**, at a minimum, a **knowledgeable, accessible, and responsive** employee who acts as a liaison and provides assistance to those students who are exempt from the payment of tuition and fees to assist in resolving any problems related to such exemption. The liaisons shall provide such students with on-campus support and must be employees of the program, institution, or university. The name and contact information of the liaison must be:

1. Provided to each student who is exempt from the payment of tuition and fees and who is attending that program, institution, or university.
2. Published on the website of the program, institution, or university.
3. Provided to the department and each community-based care lead agency.

(b) Each school district program, Florida College System institution, and state university **must maintain the original documentation** submitted by the student regarding his or her eligibility for the tuition and fee exemption under s. [1009.25](#) and may not make additional requests for such documentation.

(2) A school district program, Florida College System institution, or state university **may also provide campus coaching services** and other support to a student who is exempt from the payment of tuition and fees under s. [1009.25](#) to promote his or her successful completion of postsecondary education and transition to independent living.





Partners and Programs

Membership Expectations

- Help students with enrollment, financial aid applications, and exploration of career opportunities
- Connect students with resources (academic and community)
- Develop campus connections and internal networks
- Participate in monthly program conference calls
- Voice opinions and concerns on matters of importance related to the students
- Provide current contact information to Positive Pathways Program leaders

Student Services
We're here to help

Academic Resources



Partners

- [Florida College Access Network \(FCAN\)](#): plays a leading role in promoting postsecondary education throughout Florida
- [Florida Guardian ad Litem \(GAL\) Program](#): their extensive experience can be used in an educational mentoring capacity with students from foster care using the tuition exemption
- [Southern Scholarship Foundation](#): Provides no-cost housing on a competitive basis.
- [AOK Scholar Foundation](#): Provides emergency funding to students who receive the homeless or DCF waiver
- [Florida Guardian ad Litem](#): Florida Guardian ad Litem represent the legal interests of Florida's most vulnerable children, the abused, abandoned and neglected.



Florida Public Universities with Programs or Initiatives For Students Using Tuition and Fee Exemption





Educate Tomorrow @ Miami Dade College

Educate Tomorrow at Miami Dade College is a student support program that supports MDC students from foster youth, as well as homeless, unaccompanied or other disadvantaged youth. We also help students who receive the Department of children and Families tuition waiver. We offer academic support and mentoring services through our Changemaker Corps Peer Mentor Program with the goal of creating a strong network of support, streamlined academic and financial advising, and access to services in the community in order to increase academic progress and graduation rates.

Click [HERE](#) for more information.



Seahawk Outreach Services (SOS)

The Mission of Seahawk Outreach Services (SOS) is to provide wrap-around services and holistic support to students by connecting them to key campus resources and referring them to community organizations. The goal of SOS is to help reduce food and housing insecurities, stress/mental health challenges, homelessness, and financial obstacles among our student population.

Click [HERE](#) for more information.



GROW WITH RISE

The mission of the *Road to Independence, Success, and Excellence* program, better known as RISE, is to increase the graduation rate of students using the Florida Department of Children and Families Tuition and Fee Exemption and students using the Homeless Fee Exemption, as well as to enhance their overall academic experience.

The RISE program is housed at the St. Petersburg/Gibbs Campus but serves all 11 SPC locations.



Click [HERE](#) for more information.



Tallahassee
Community
College

Emerging Eagles

The Emerging Eagles Program (Fostering Achievement Program) was established to address the overwhelming need for a comprehensive support structure to assist foster youth in making the transition from a structured foster care program to independent young adulthood. The Fellowship program will provide financial, academic, and social support to assist college-bound youth aging out of foster care to pursue a college education. These supports come in many forms, including individual and group meetings, the creation of educational plans, as well as the continued linkage of resources both within the TCC community and the Tallahassee community at large.

Click [HERE](#) for more information.



Educate Tomorrow at FAU

The Educate Tomorrow at FAU Program is a student support program designed to support FAU students who receive the DCF or homeless tuition waiver. We provide students with wrap around support services from admission to graduation, with a goal of creating a strong foundation of support, academic coaching and advising, and access to services on and off campus in order to increase academic progress and graduation rates. For more information click [here](#).



Catherine Aroca Avellaneda
Academic Advisor/Coach
(561) 297 3064
educatetomorrow@fau.edu

OVERVIEW



Joseph Contes, LMHC, MCAP, NCC
Director - Tampa and St. Petersburg campus

ABOUT US

USF Pearls is a program designed and created for students emerging from the foster-care system. The USF Pearls program aims to close the degree attainment gap for these motivated and talented students by providing intentional supportive coaching.

| Phone | Email | Office Location |
|--------------|--|-----------------|
| 727-873-4872 | USFPEARLS@USF.EDU | SLC 2402 |

[CLICK HERE](#) for more information.



Fostering Panther Pride

Florida International University's Fostering Panther Pride (FPP) program offers tailored academic and support services to students identified as formerly in foster care or homeless.

Launched in 2013, the primary goal of FPP is to assist former foster care youth and homeless students in their transition to FIU, their retention and graduation, and their pursuit of securing employment or graduate studies upon receiving their bachelor's degree.



Ana Ramos
Program Director
Fostering Panther Pride
Anramos@FIU.edu
(305) 348-6106



The Unconquered Scholars Program

The Unconquered Scholars Program provides an array of support services promoting overall success to youth who experienced foster care, homelessness, relative care, or ward of the State status. Many Scholars have faced profound hardships during childhood that may increase their risk of leaving academia without a degree. In fact, research indicates former foster youth are far less likely to earn a degree than their non-foster care peers. Florida State University is committed to meeting the unique needs of Unconquered students so they experience the long-term professional and personal benefits associated with educational attainment. For more information click [here](#).



Caitlin Cates
Program Coordinator
Unconquered Scholars
(850) 644-3605
cmcates@fsu.edu

Florida's Colleges have designated individuals in a variety of types of positions to be their campus contacts
Green Arrows indicate Representatives of Fully Established Campus Programs



| Firstname | Lastname | University | City | position | Email | Phone |
|--------------|----------------|--|---------------|--|-----------------------------------|----------------------------|
| Melanie | Gnaizda-Gilson | Broward College (North & Online) | Coconut Creek | Manager of Student Services | mгнаизда@broward.edu | 954-201-2310 |
| Cynthia | Brelsford | Broward College (South and Partnership Campus) | Hollywood | Manager of Student Services | cbrelsfo@broward.edu | 954-201-8324 |
| Harold | Garcia | Broward College (Central Campus) | Davie | Manager of Student Services | hgarcia2@broward.edu | 954-201-4859 |
| Melissa | Cauley | Chipola College | Marianna | Director of Student Services | cauleym@chipola.edu | 850-526-2761 Ext. 2451 |
| Denea | Hollis | College of Central Florida | Ocala | Foster Care Liaison | hollisd@cf.edu | 352-873-5800, Ext. 1304 |
| TBA | - | Daytona State College | Daytona Beach | Foster care liaison | Octavia.mulberry@daytonastate.edu | 386-506-3024 |
| Chris | Stankiewicz | Eastern Florida State College | Melbourne | Director, Campus Admissions/Advisement | cadorem@easternflorida.edu | 321-433-5019 |
| Anthony | Cardenas | Florida Gateway College | Lake City | Vice President of Student Affairs and Public Information | Anthony.Cardenas@fgc.edu | 386-754-4324 |
| Katie | Norland | Florida Keys Community College | Key West | Assistant Director of Student Success, Disability Services | katie.norland@cfk.edu | 305-809-3181 |
| Joseph Lloyd | Harris | Gulf Coast State College | Panama City | Dean, Student Engagement | lharris@gulfcoast.edu | 850-747-3211 |
| Melissa | Lavendar | Gulf Coast State College | Panama City | Vice President, Student Affairs | lharris@gulfcoast.edu | 850-747-3211 |
| Judith | Gaspar | Hillsborough Community College | Tampa | Special Services Coordinator | jgaspar@hccfl.edu | 813-253-7046 |
| Ryan | Barnett | Hillsborough Community College | Tampa | Academic Support Services Manager | rbarnett2@hccfl.edu | 813-253-7437 |
| Joseph | Lemieux | Indian River State College | Fort Pierce | Advisor Specialist | jlemieux@irsc.edu | 772-462-7129 |
| Andrea | Brooks | Lake-Sumter State College | Leesburg | Assistant Director of Admissions | BrooksA@LSSC.edu | 352-536-22 |



Florida's Colleges have designated individuals in a variety of types of positions to be their campus contacts
Green Arrows indicate Representatives of Fully Established Campus Programs



| | | | | | | |
|------------|-----------------|--|-----------------|---|--------------------------------|----------------|
| Wendy | Joseph | Miami Dade College; North Campus | Miami | Educate Tomorrow Program Coordinator; College Coach | wjoseph@mdc.edu | 305-237-1514 |
| Sandra | Obas | Miami Dade College; Kendall/Wolfson Campus | Miami | Educate Tomorrow Program Coordinator; College Coach | sobas@educatetomorrow.org | 305-237-0923 |
| Sheila | Nobles | North Florida Community College | Madison | Director of Student Support Services / Disability Resource Center | nobless@nfcc.edu | 850-973-9432 |
| Heather | Dietzold, M.Ed. | Northwest Florida State College | Niceville | Executive Director of Student Success Navigation | dietzoh@nwfsc.edu | 850-729-6075 |
| Robin | Russo | Palm Beach State College | Lake Worth | Director, Student Well Being | russor@palmbeachstate.edu | 561-868-3819 |
| Latisha | Myrick | Palm Beach State College | Lake Worth | Academic Advisor | myrickl@palmbeachstate.edu | |
| Jessica M. | White, MS | Pasco-Hernando State College | New Port Richey | Associate Dean of Retention and Student Life | whitej@phsc.edu | 727-816-3764 |
| Jessica | M. Johnson | Pensacola State College | Pensacola | Director, Wellness Services | jmjohnson@pensacolastate.edu | 850-484-2139 |
| Susan | Morgan | Polk State College | Winter Haven | Director, Student Enrollment | morgan@polk.edu | 863-298-6820 |
| Niki | Martin | Polk State College | Winter Haven | Assistant Registrar | nmartin@polk.edu | |
| Bea | Awoniyi | Santa Fe College | Gainesville | Assistant Vice President for Student Affairs & College Ombudsman | bea.awoniyi@sfccollege.edu | 352-395-5513 |
| Mercedes | Bermejo | Seminole State College of Florida | Sanford | Interim Director, Holistic Student Support | bermejom@seminolestate.edu | 407-708-2897 |
| Sofia | Ochoa | South Florida State College | Avon Park | College Recruiter | ochoas@southflorida.edu | 863-784-7447 |
| Gilbert | Evans | St. Johns River State College | Palatka | Vice President, Student Affairs/Assistant General Counsel | gilbertevans@sjrstate.edu | 386-312-4200 |
| Austin | Crawford | St. Petersburg College | St. Petersburg | Coordinator, RISE Program | crawford.austin@spcollege.edu | 727-34-4464 |
| Susanne | Walters | State College of Florida, Manatee-Sarasota | Bradenton | Coordinator, Student Support Services | walters@scf.edu | 941-752-5603 |
| Catherine | Hasboyaci | Valencia College | Orlando | Manager, Answer Center - Osceola Campus | chasboyaci@valenciacollege.edu | (321) 682-4808 |



Florida's Universities have designated individuals in a variety of types of positions to be their campus contacts

Green Arrows indicate Fully Established Programs



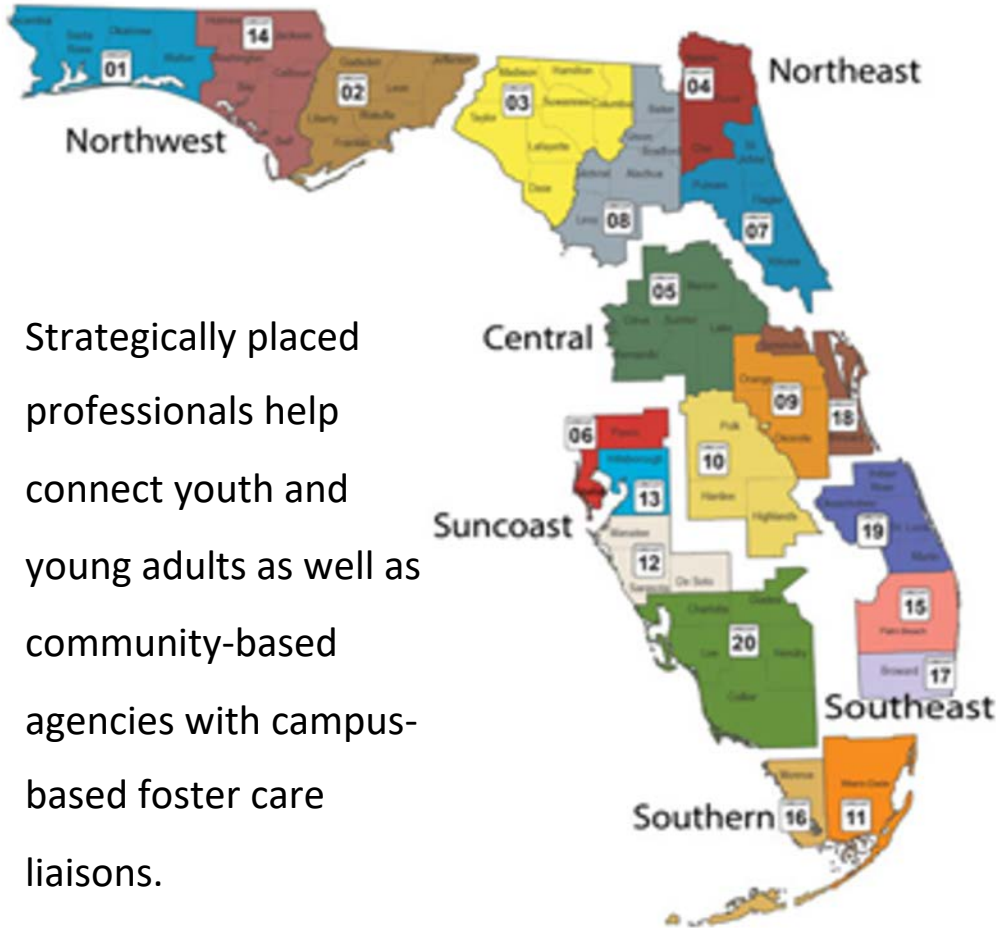
| First Name | Last Name | University | City | Position / Division or Program | Email | Phone |
|------------|--------------|----------------------------------|--------------|--|---------------------------|--------------|
| Joseph | Murray | Florida Atlantic University | Boca Raton | Associate Dean, Undergraduate Studies | murrayj@fau.edu | 561-297-3064 |
| Dee Ella | Evans | Florida A & M University | Tallahassee | Case Manager | deeella1.evans@fam.u.edu | 850-599-8513 |
| Dan | Hoover | Florida Gulf Coast University | Ft. Myers | Asst Dean, Student Care Services | dan.hoover@fgcu.edu | 239-590-1000 |
| Ana | Ramos | Florida International University | Miami | Program Director, Fostering Panther Pride | anramos@fiu.edu | 305-348-6106 |
| Jasmine | Rucker, MSW | University of West Florida | Pensacola | Coordinator, Case Management Services | jrucker@uwf.edu | 850 474-2384 |
| Caitlin | Cates | Florida State University | Tallahassee | Coordinator, Unconquered Scholars | cmcates@fsu.edu | 850-644-3605 |
| Deborah | Scarselletta | New College of Florida | Sarasota | Student Support Team Case Manager | dscarselletta@ncf.edu | 941-487-4259 |
| Tammie | Nadeau | University of Central Florida | Orlando | Assistant Director, Multicultural Academic and Support Services, Director, Knight Alliance Network | tammie.nadeau@ucf.edu | 407-823-1832 |
| Nadene | Reynolds | University of Florida | Gainesville | Case Manager | nrreynolds@ufsa.ufl.edu | 352-294-2788 |
| Katherine | Kambach | University of North Florida | Jacksonville | Assistant Director, Dean of Students Office | katherine.kambach@unf.edu | 904-620-1491 |
| Joseph | Contes | University of South Florida | Tampa | Assistant Director, Student Outreach & Support | Jcontes1@usf.edu | 727-873-4272 |
| David | Saunders | University of West Florida | Pensacola | Assistant Director for Recruitment, College of Business | dsaunders@uwf.edu | 850-474-2384 |
| Dawn | Rockey | University of West Florida | Pensacola | Assistant Dean of Students for Case Management Services | drockey@uwf.edu | 850-474-2384 |





Resources

DCF Regions

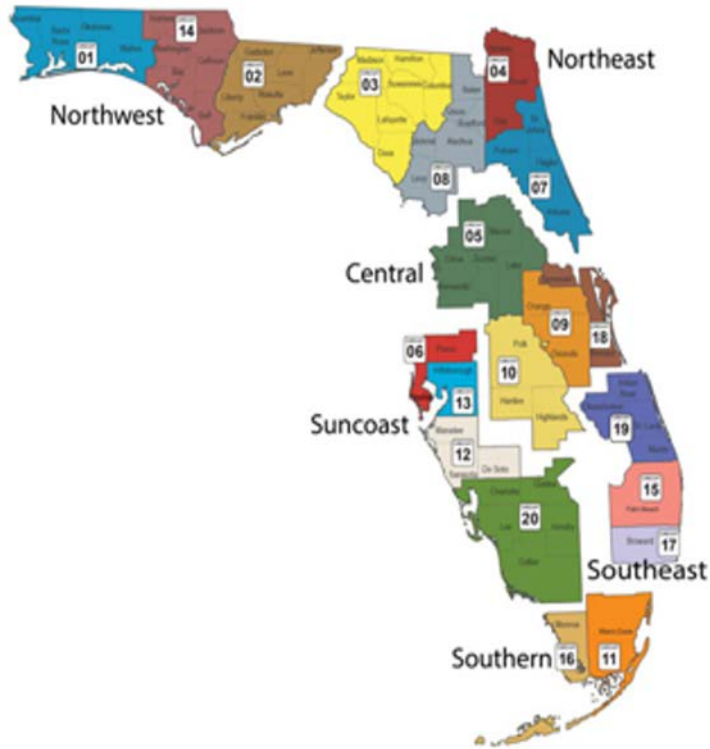


Strategically placed professionals help connect youth and young adults as well as community-based agencies with campus-based foster care liaisons.

| Region / Circuit | Contact |
|--|--|
| Northwest Region Circuits 1, 2, 14 | Shay Rizaire Community Liaison Allan Madden Foundation (352) 800-9863 shayrazaire@allanmaddenfoundation.org |
| Northeast Region Circuits 3, 4, 7, 8 | Shay Rizaire Community Liaison Allan Madden Foundation (352) 800-9863 shayrazaire@allanmaddenfoundation.org |
| Central Region Circuits 5, 9, 10, 18 | Marquina Butts-Fisher Independent Living Coordinator Heartland for Children (863) 519-8900 x 238 Mbutts@HeartlandforChildren.org |



DCF Regions



| Region / Circuit | Contact | Contact |
|--|---|---|
| Suncoast Region Circuits 6, 12, 13, 20 | Althea K. Blake, EdD. Founder, Higher Agency (813) 580-7874 altheakblake@gmail.com | Jamie Bennett, LMSW, ACC Co-founder, Cetera, Inc. (269) 271-1608 jamie@jlbtraining.com |
| Southeast Region Circuits 15, 17, 19 | Jasmine Moore Associate Director Educate Tomorrow (409)-996-1369 jasmine@educatetomorrow.org | |
| Southern Region Circuits 11, 16 | Varzi Jean-Baptiste Senior Director and Care Coordinator Educate Tomorrow (786) 223-7541 Varzi@educatetomorrow.org | |



CoC & CBC: Homeless & Foster Care Services

Continuum of Care (CoC)

- Continuums of Care (CoC) are organizations composed of representatives of nonprofit homeless providers, victim service providers, faith-based organizations, governments, businesses, advocates, public housing agencies, school districts, social service providers, mental health agencies, etc.
- **Students who receive the homeless waiver may be connected to these organizations.**

Community Based Care (CBC)

- Community-Based Care is a comprehensive redesign of Florida's Child Welfare System. It combines the outsourcing of foster care and related services to competent service agencies with an increased *local community ownership* of service delivery and design. This innovative statewide reform increases accountability, resource development, and system performance.
- **Students who have experienced foster care are connected to a CBC..**

CoC lead agency service areas are shown below. Select your county on the map below to connect with the CoC lead agency in your area or download a list of CoC Contacts.

Enter a County

Continuum of Care (CoC)



Circuit 1

- Escambia • Okaloosa
- Santa Rosa • Walton

[CoC Lead Agency >](#)



Circuit 2

- Franklin • Gadsden
- Leon • Liberty
- Jefferson • Wakulla

[CoC Lead Agency >](#)



Circuit 3

- Columbia • Dixie
- Hamilton • Lafayette
- Madison • Suwannee



Circuit 4

- Clay • Duval
- Nassau

FLORIDA'S CHILD WELFARE SYSTEM IS COMPRISED OF CBC LEAD AGENCIES WHICH COMBINES THE OUTSOURCING OF FOSTER CARE AND INDEPENDENT LIVING SERVICES. THIS DESIGN PROVIDES COMMUNITY OWNERSHIP OVER THE PROGRAMS AND SERVICES DESIGNED TO HELP OLDER FOSTER YOUTH AND YOUNG ADULTS WHO HAVE SPENT TIME IN FLORIDA'S SYSTEM OF CARE.

COMMUNITY-BASED CARE AGENCIES

[CLICK HERE FOR LIST OF ALL INDEPENDENT LIVING CONTACTS](#)

[CLICK HERE FOR LEAD AGENCY LEADERS](#)

[CLICK HERE FOR LEAD AGENCY WEBSITES](#)



Contact Information

About Educate Tomorrow / Pathways Staff

- Established in 2003 as a mentoring organizations exclusively for students using the DCF tuition and fee exemption
- Award-winning, nationally recognized
- Serves current and former foster youth, homeless youth, and other vulnerable transitioning young adults
- Strives to make higher education an attainable goal for all
- Provides multi-year, goal-oriented academic and career coaching, intensive skill-building workshops and enrichment activities
- Began to administer the Pathways Program in 2016 under a contract with DCF.



Brett McNaught
Chief Executive Officer
Educate Tomorrow
Positive Pathways Program Supervisor



Dr. Steve J. Rios
Senior Director
Positive Pathways



Jasmine Moore
Associate Director
Educate Tomorrow
Positive Pathways



www.PositivePathwaysFlorida.org



HOME

ABOUT US

COLLEGE TOUR SURVEYS

THE PATH NEWSLETTER

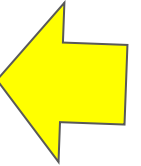
PROGRAMS & LIAISONS

UPCOMING EVENTS

NON DISCRIMINATION STATEMENT

RESOURCES

JOIN THE
NETWORK



WELCOME TO POSITIVE PATHWAYS

We Promote Focused and Consistent Campus-based Support to Help Students Succeed

Positive Pathways is a program funded by the Florida Department of Children and Families and is an initiative of Educate Tomorrow.



Join The Positive Pathways Network

Use the form below to sign up for the Positive Pathways Program's monthly on boarding, your gateway to become a member of the Positive Pathways Network.

Learn about valuable member benefits. We look forward to welcoming you!

| | | |
|--|---|------------|
| First Name | <input type="text"/> | * Required |
| Last Name | <input type="text"/> | * Required |
| Email Address | <input type="text"/> | * Required |
| Password For Future Event Registrations | <input type="password"/> | |
| Title | <input type="text"/> | * Required |
| Organization | <input type="text"/> | * Required |
| Please select the Type of Organization you are affiliated with | <input type="text" value="Select Value"/> | * Required |



How to Reach Us

Phone: (786) 223-6884 or (305) 374-3751

Email: pathways@educatetomorrow.org

Website: www.positivepathwaysflorida.org

<https://twitter.com/FloridaReach>

www.facebook.com/groups/floridareach

Positive Pathways / Florida Reach

Public group · 269 members

About Discussion Guides Announcements Rooms Topics Members More



Create a public post...



Room



Anonymous Post



Photo/Video

About

The mission of Positive Pathways is to provide post-secondary outcomes for foster care youth and support. [See More](#)

